

How to Configure Security Settings

This article describes how to configure the Security Configuration Wizard. This configuration is for users who are running AGCC Workgroup. This document should be executed by your local IT Administrator only.

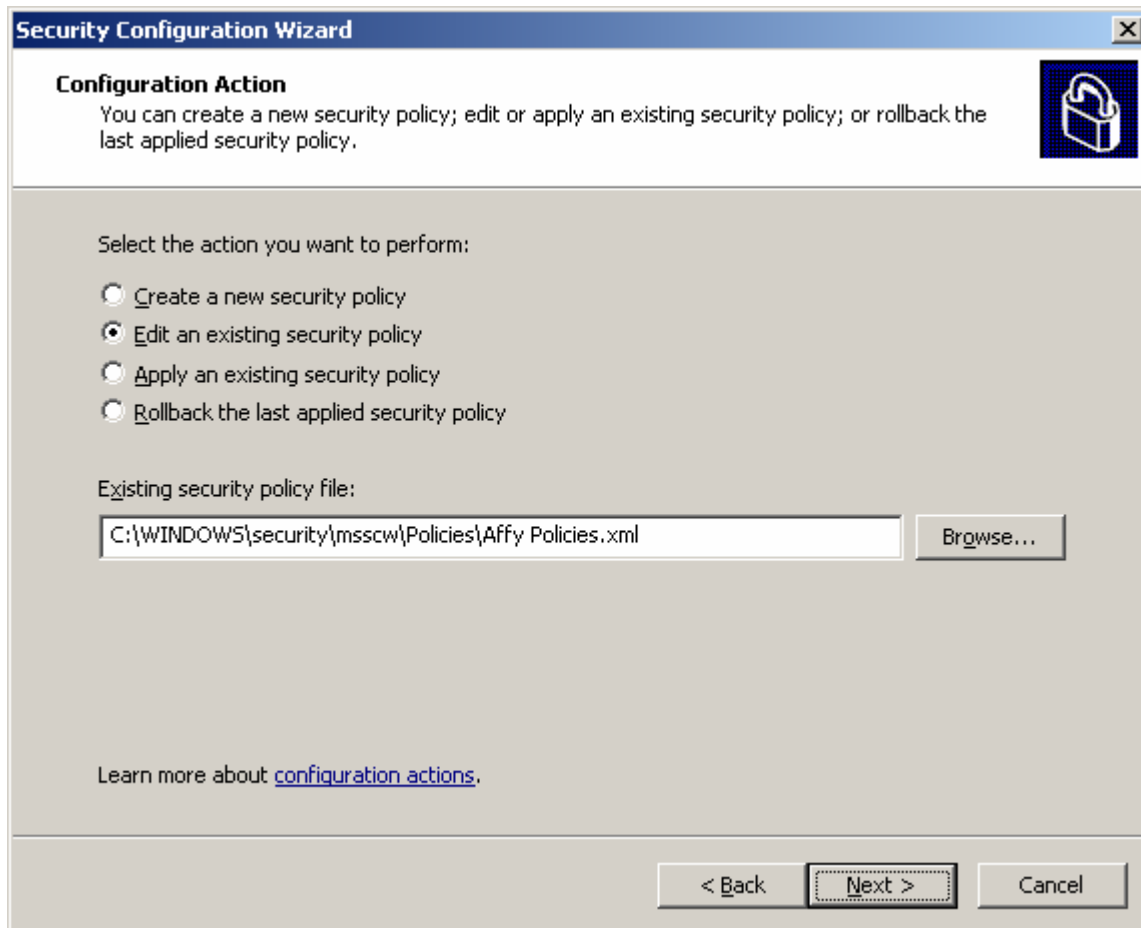
Security Configuration Wizard is an optional component of Microsoft product. The screenshots in this document may differ depending upon how your local administrator configured it initially.

The instructions below describe how to configure the Security Configuration Wizard (SCW) to allow the configuration and opening of ports to grant permissions to AGCC to access ports that the IT group allows.

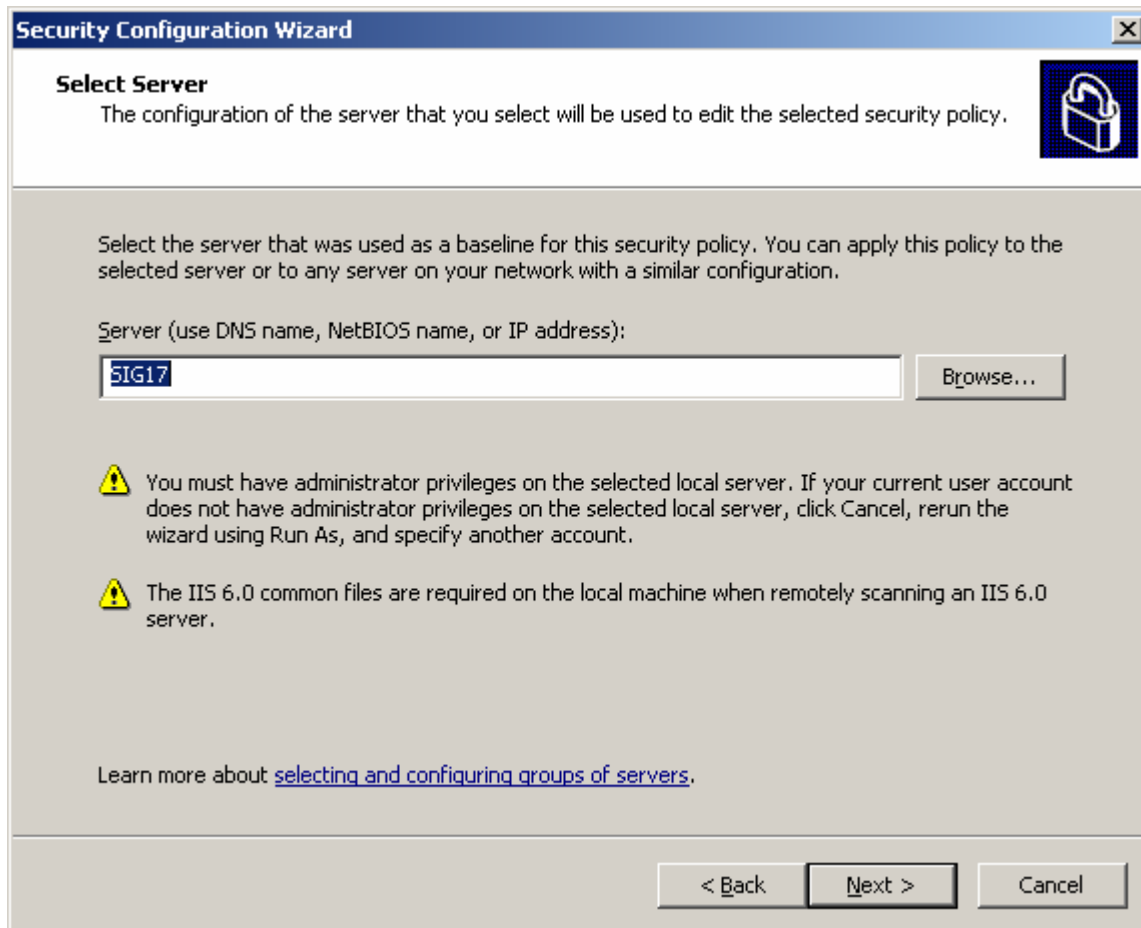
1. Go to **Start-> Administrative Tools->Security Configuration Wizard**



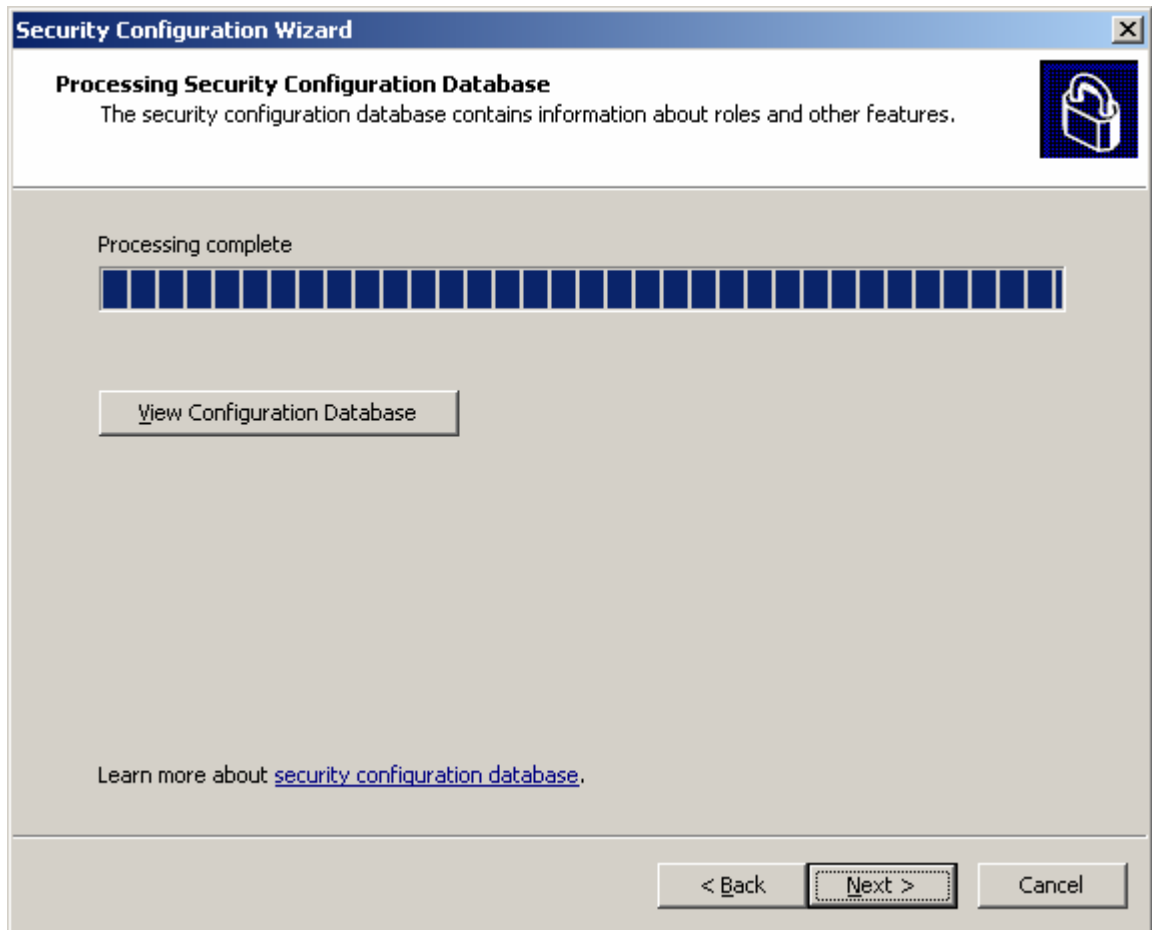
2. Choose "Edit an existing security policy" and browse to where the security policy file is located and click **Next**. There is no default security policy file location. The security policy file location is provided by your IT group/department. You will need this information to proceed through the rest of the document.



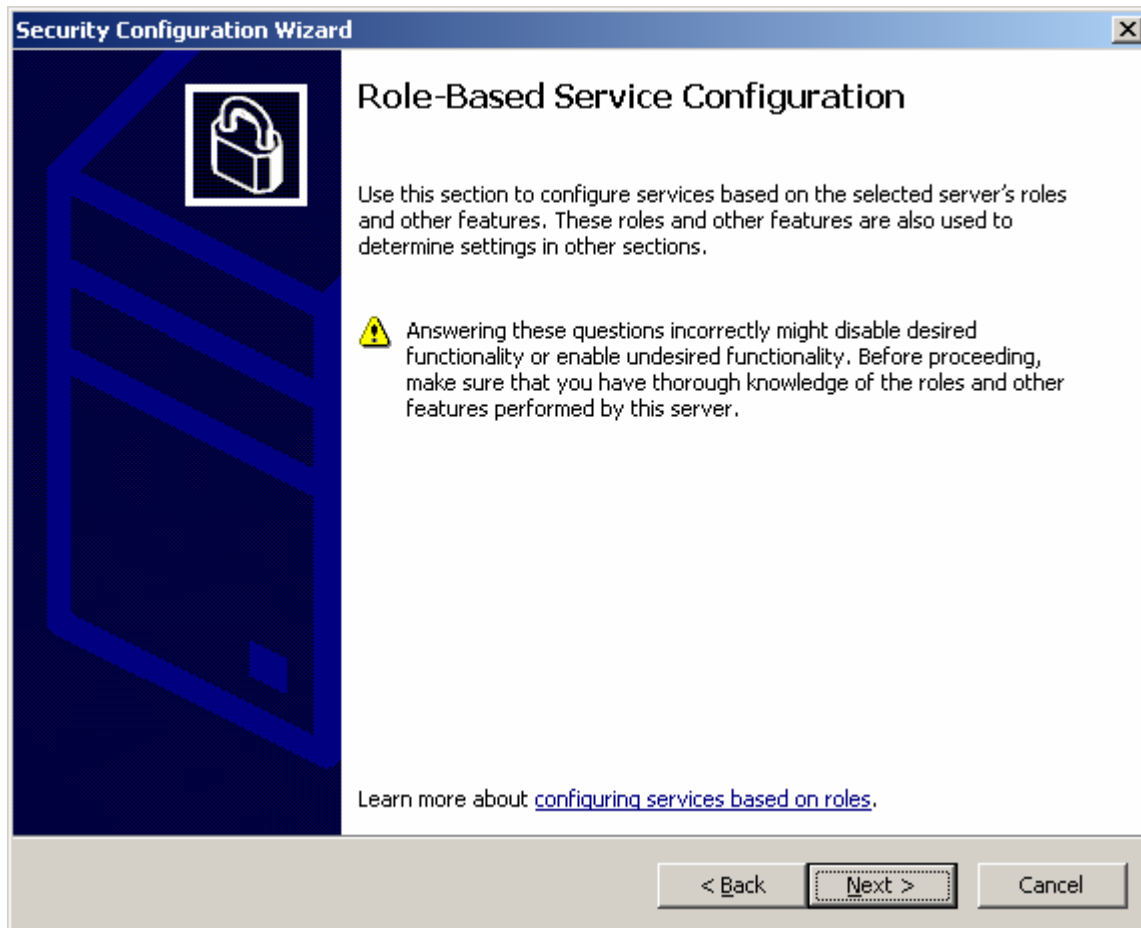
3. By default, the server name will appear (e.g., SIG17). If this is the server that is used as the baseline for all standard security across the network, then select that. Otherwise, enter the name of the server that is used as the baseline security policy.



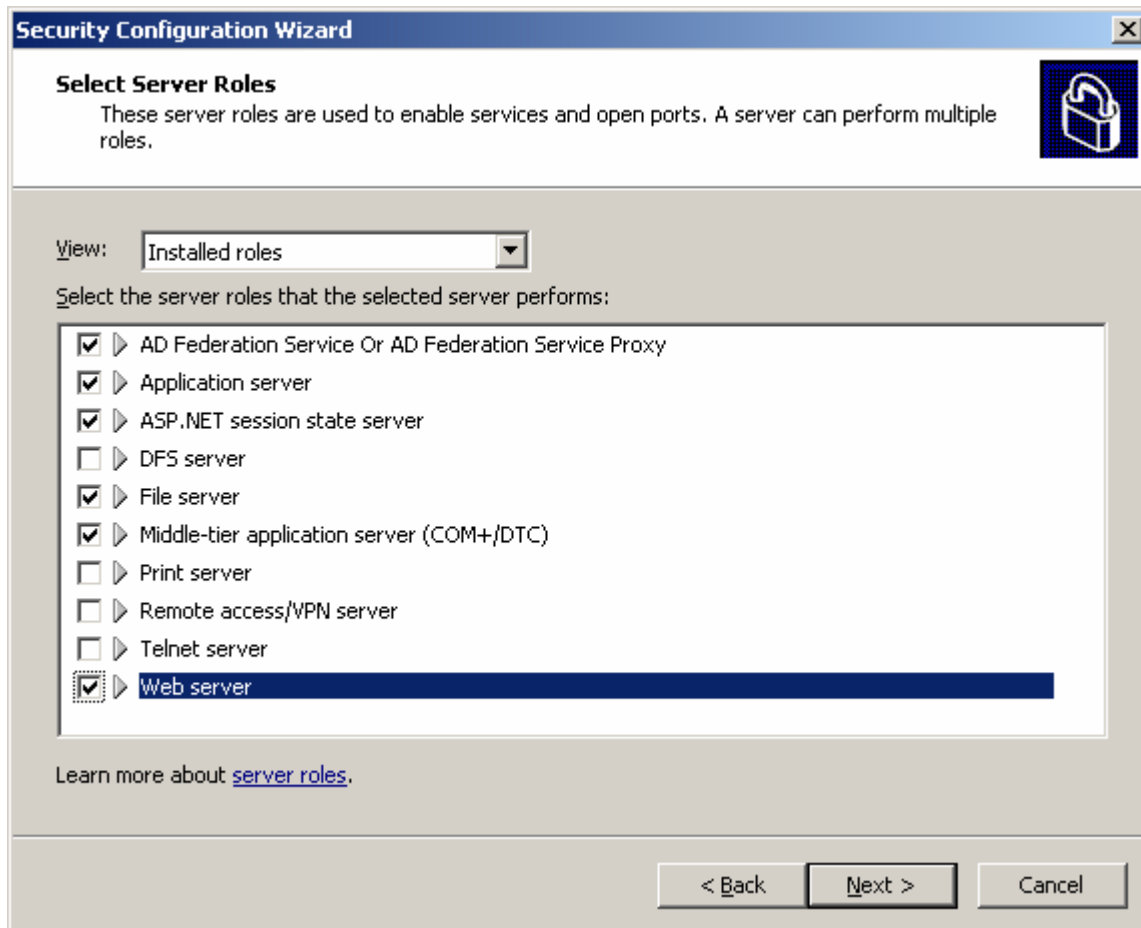
4. Click **Next**. The “Processing Security Configuration Database” screen appears below.



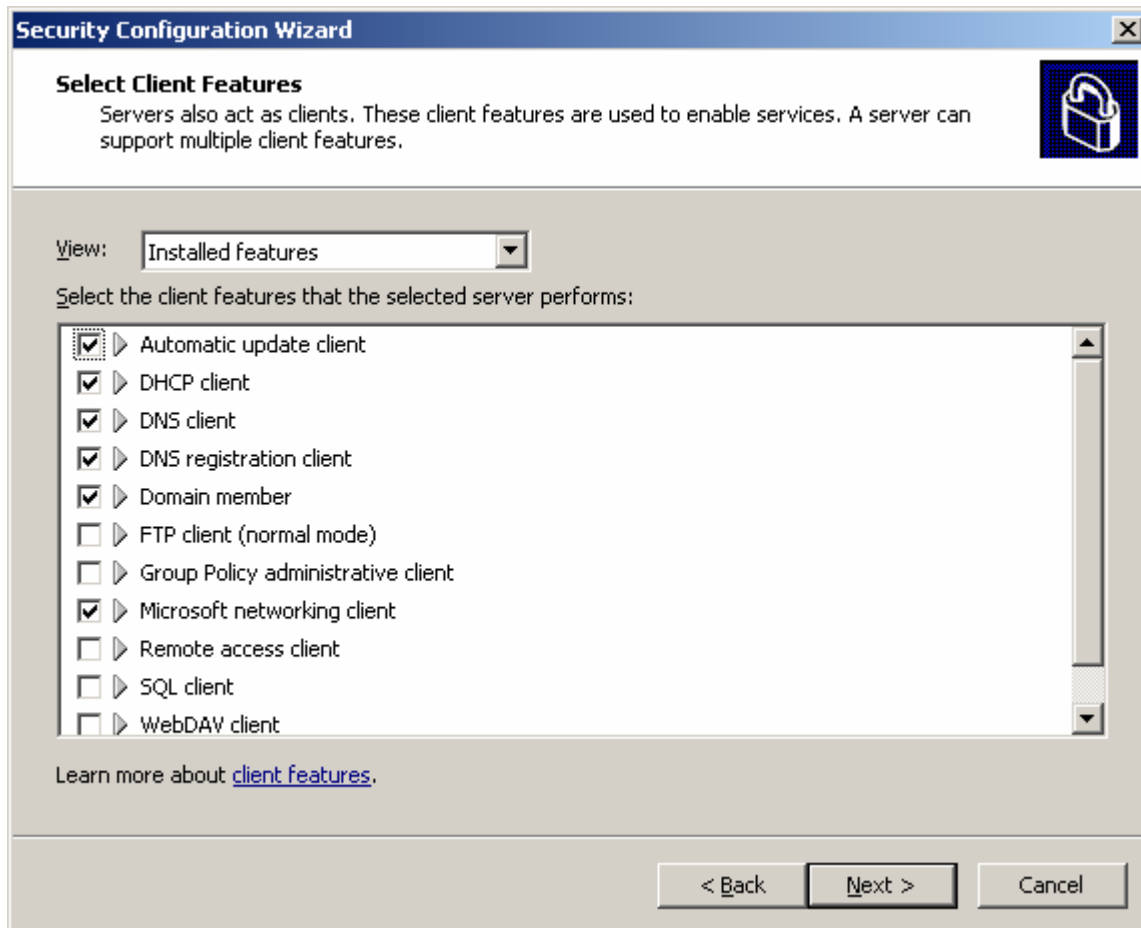
4. Click **Next** and the "Role-Based Service Configuration" screen appears below.



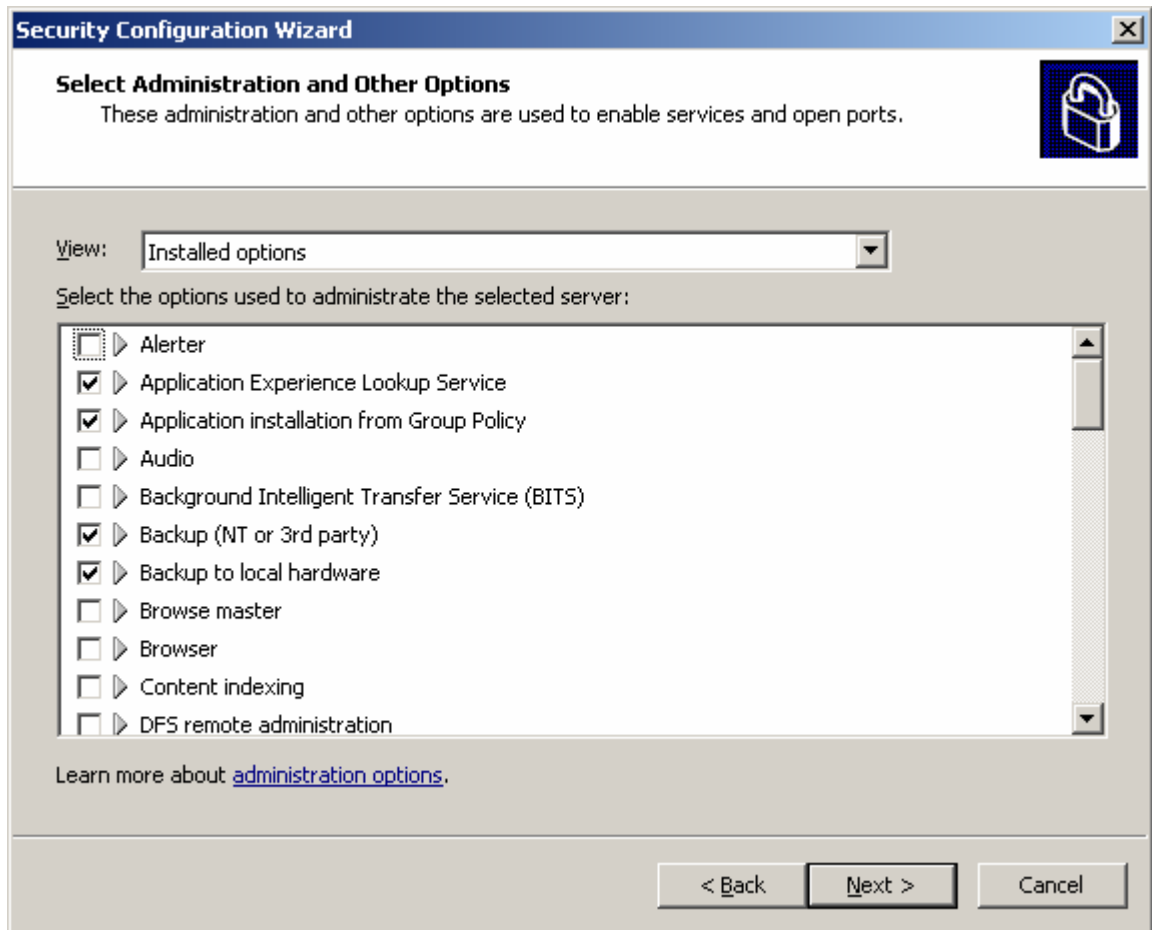
5. Click **Next** and the "Select Server Roles" appears below.



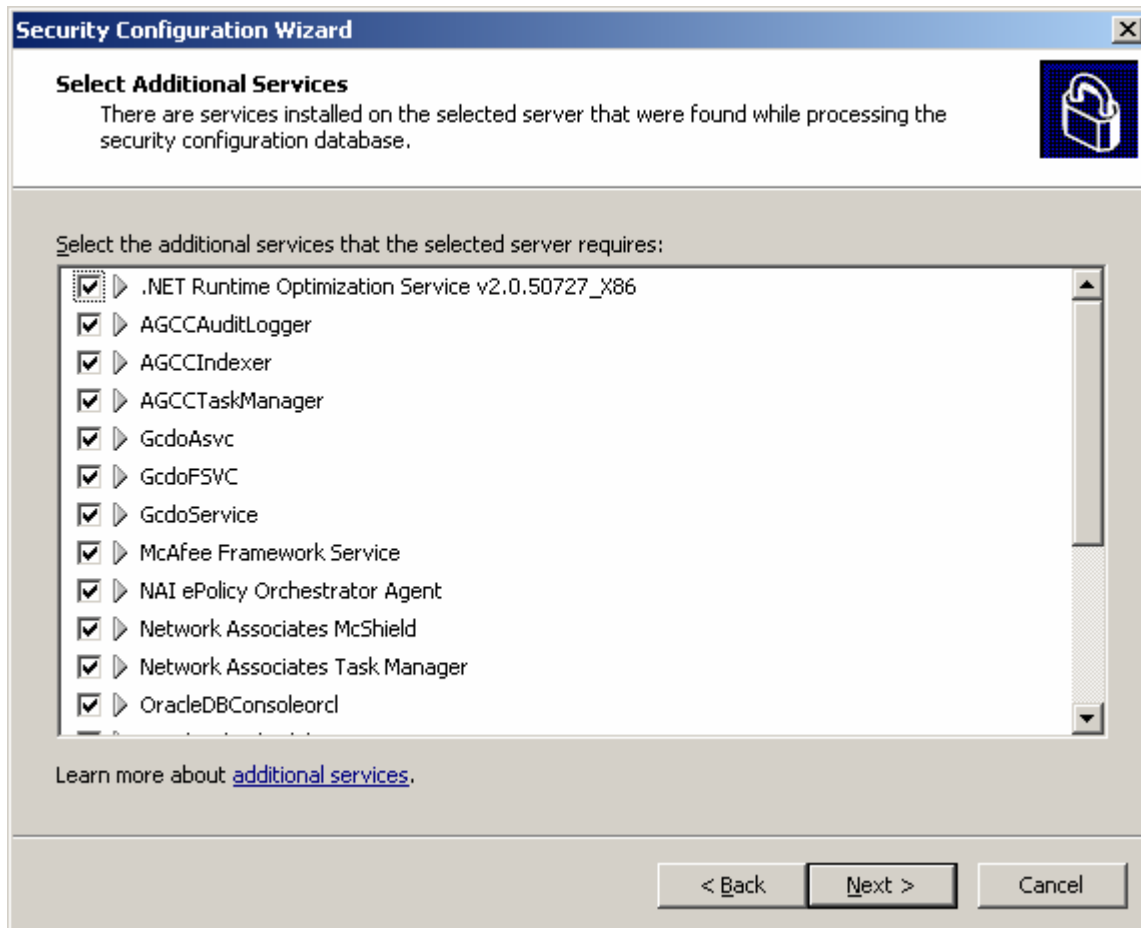
6. Verify that the Web server is checked.
7. Click **Next** and the "Select Client Features" screen appears below.



8. Leave the selected defaults and click **Next** and the “Select Administration and Other Options” screen appears below.



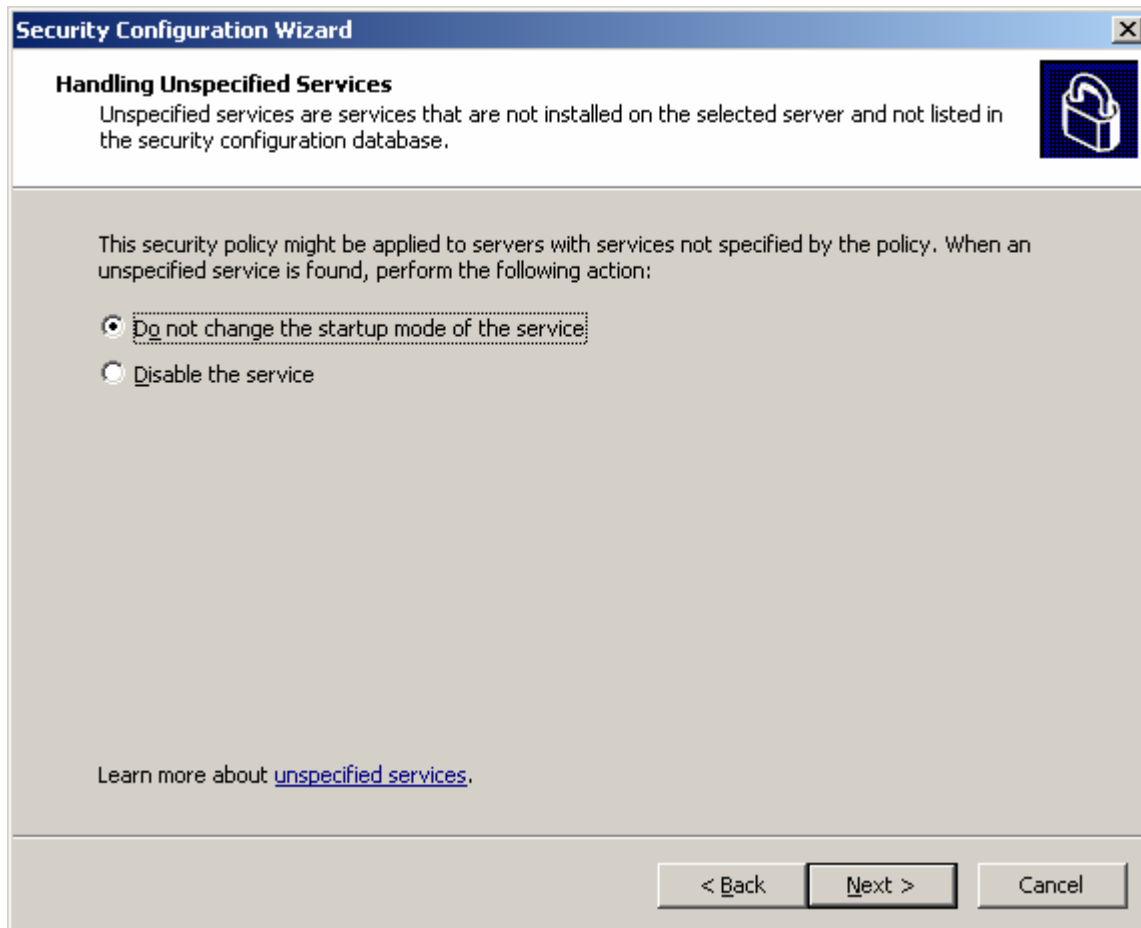
9. Leave the selected defaults and click **Next** and the “Select Additional Services” screen appears.



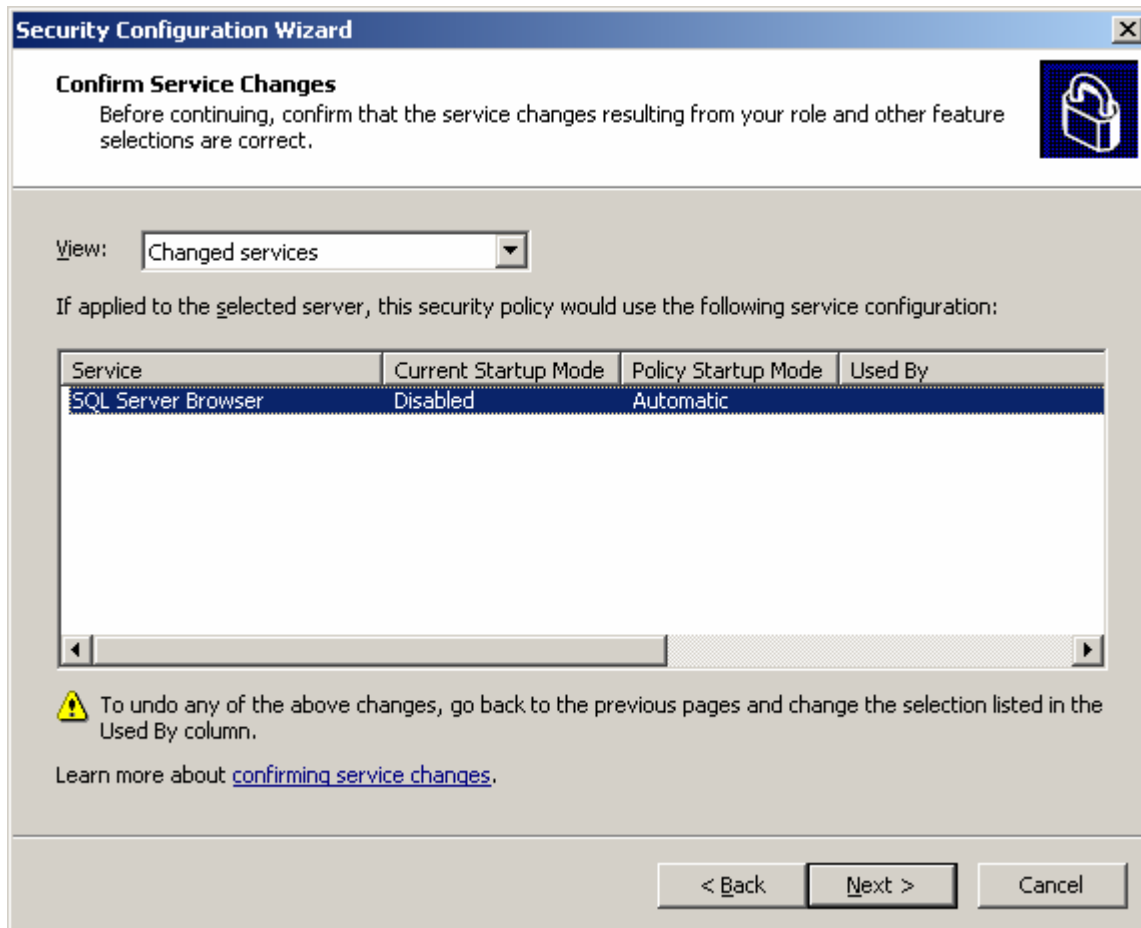
10. Verify that the following services are checked:

- a. AGCCAuditLogger
- b. AGCCIndexer
- c. AGCCTaskManager
- d. SQL Server (SQLEXPRESS)

11. . Click **Next** and the “Handling Unspecified Services” screen appears below.



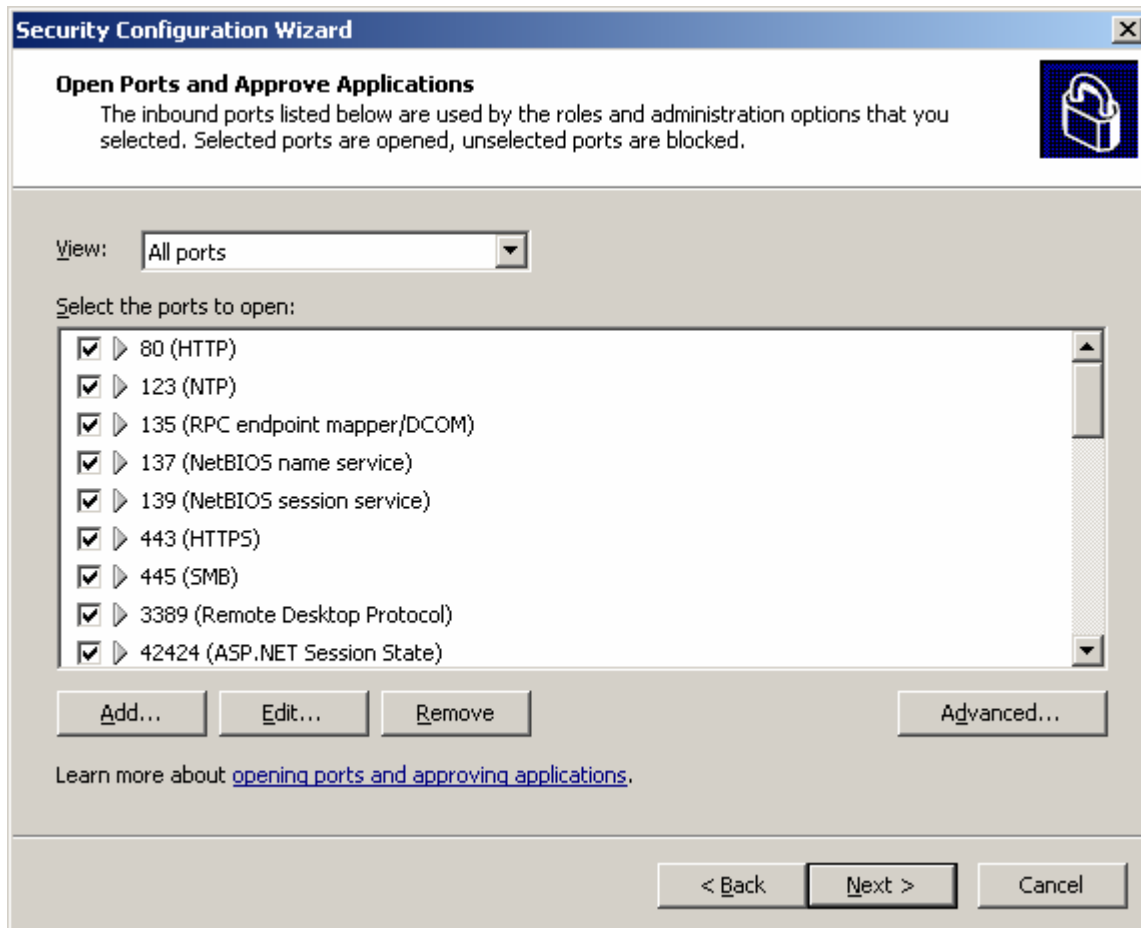
12. Leave the selected defaults and click **Next** and the “Confirm Service Changes” screen appears below.



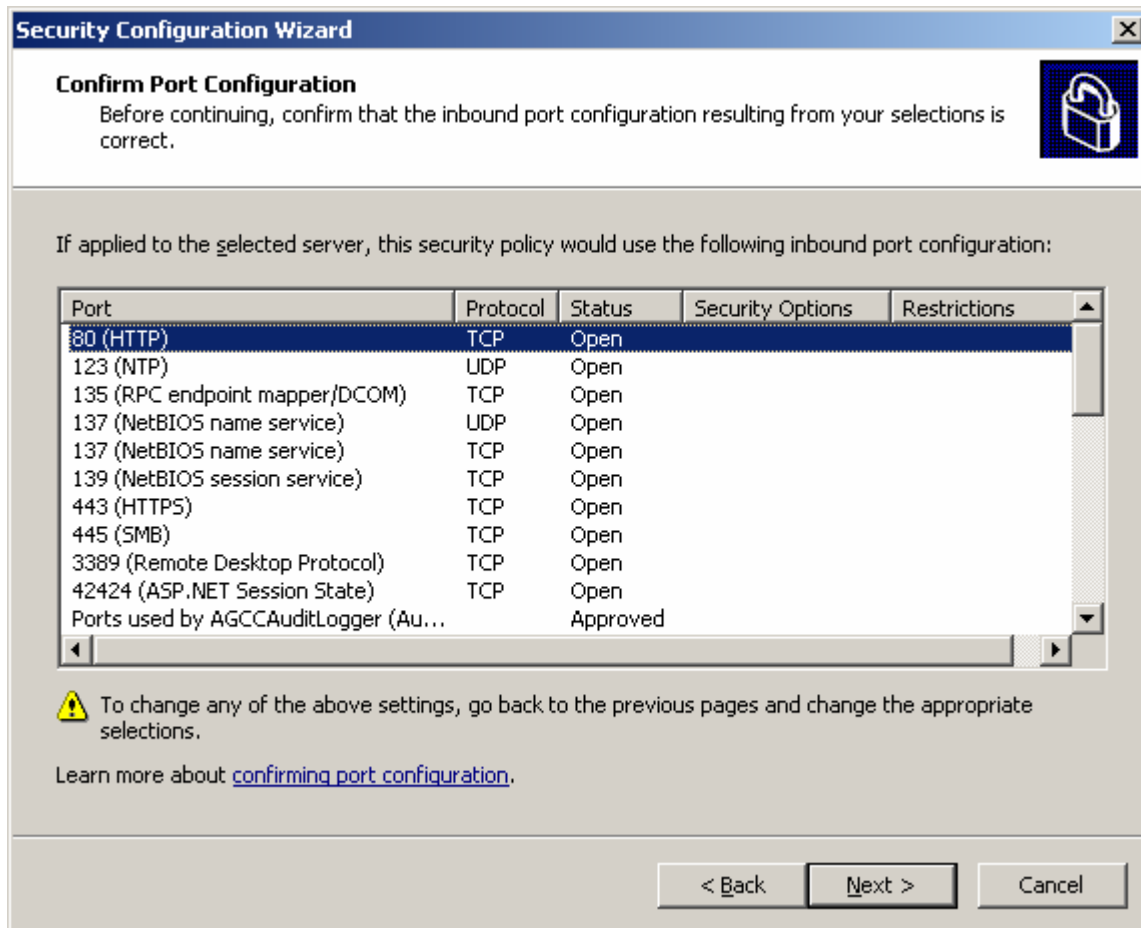
13. The screen will show all the services that were changed in step 10. Confirm the changes. Click **Next** and the "Network Security" screen appears below.



14. Uncheck "Skip this section". Click **Next** and the "Open Ports and Approve Applications" screen appears below.



15. Verify ports 80 & 443 (used by AGCC) are checked. Click **Next** and the “Confirm Port Configuration” screen appears below.



16. Verify the changes. Click **Next** and the “Registry Settings” screen appears below.



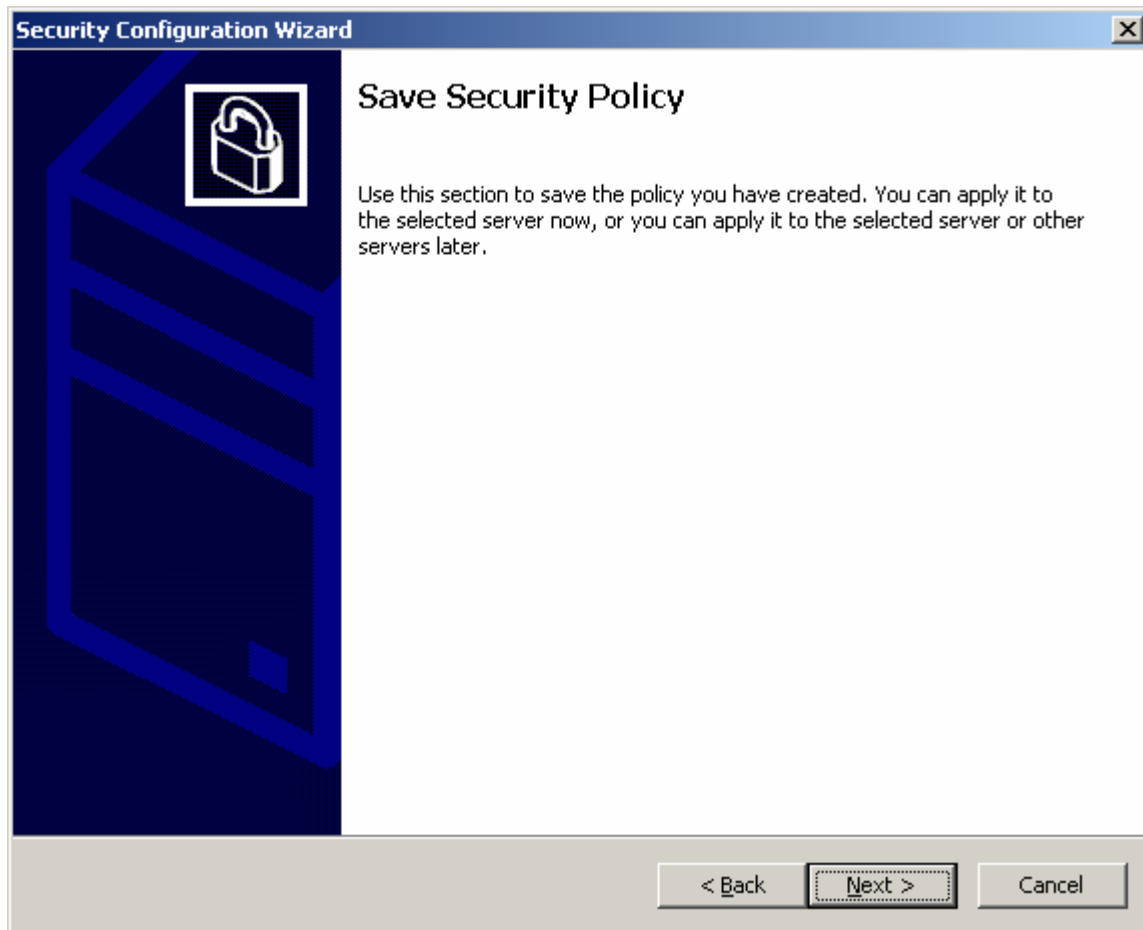
17. Check "Skip this section". Click **Next** and the "Audit Policy" screen appears below.



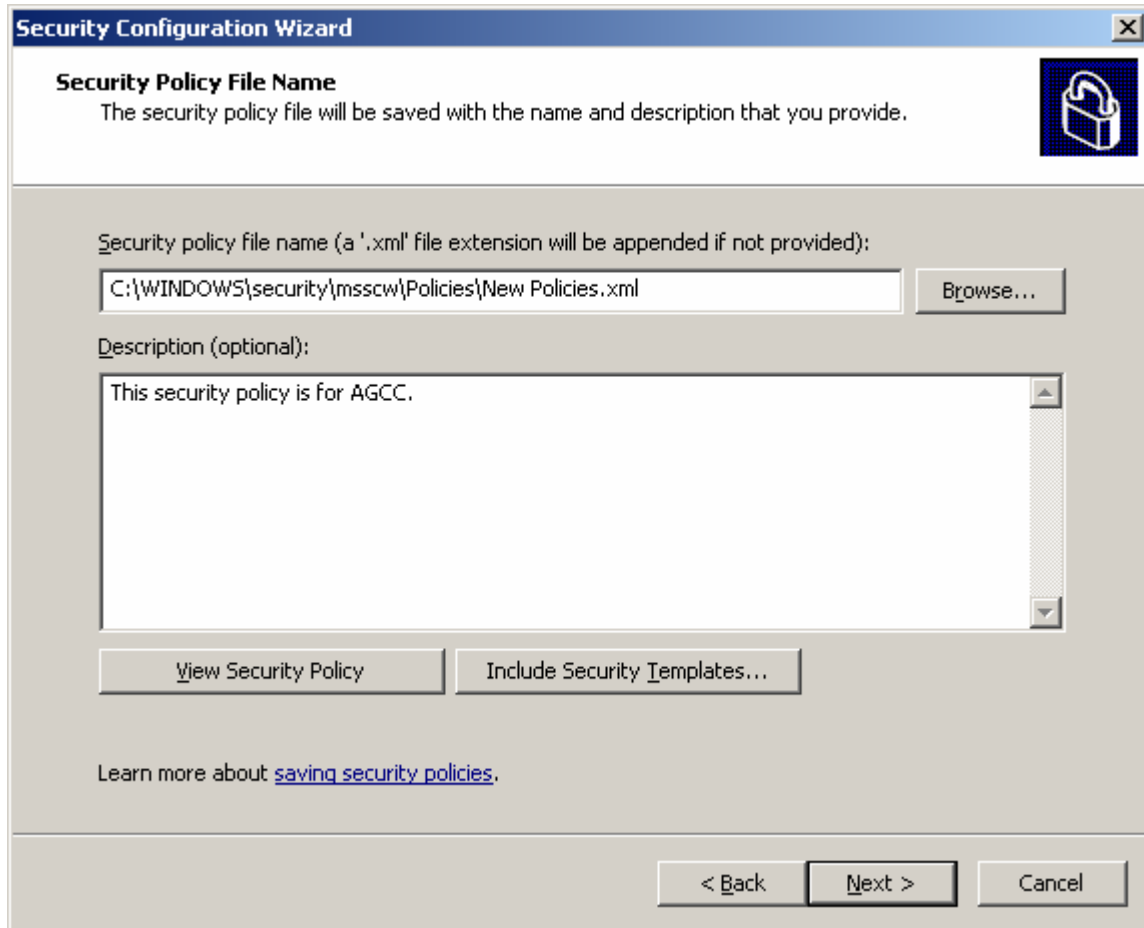
18. Check "Skip this section". Click **Next** and the "Internet Information Services" screen appears below.



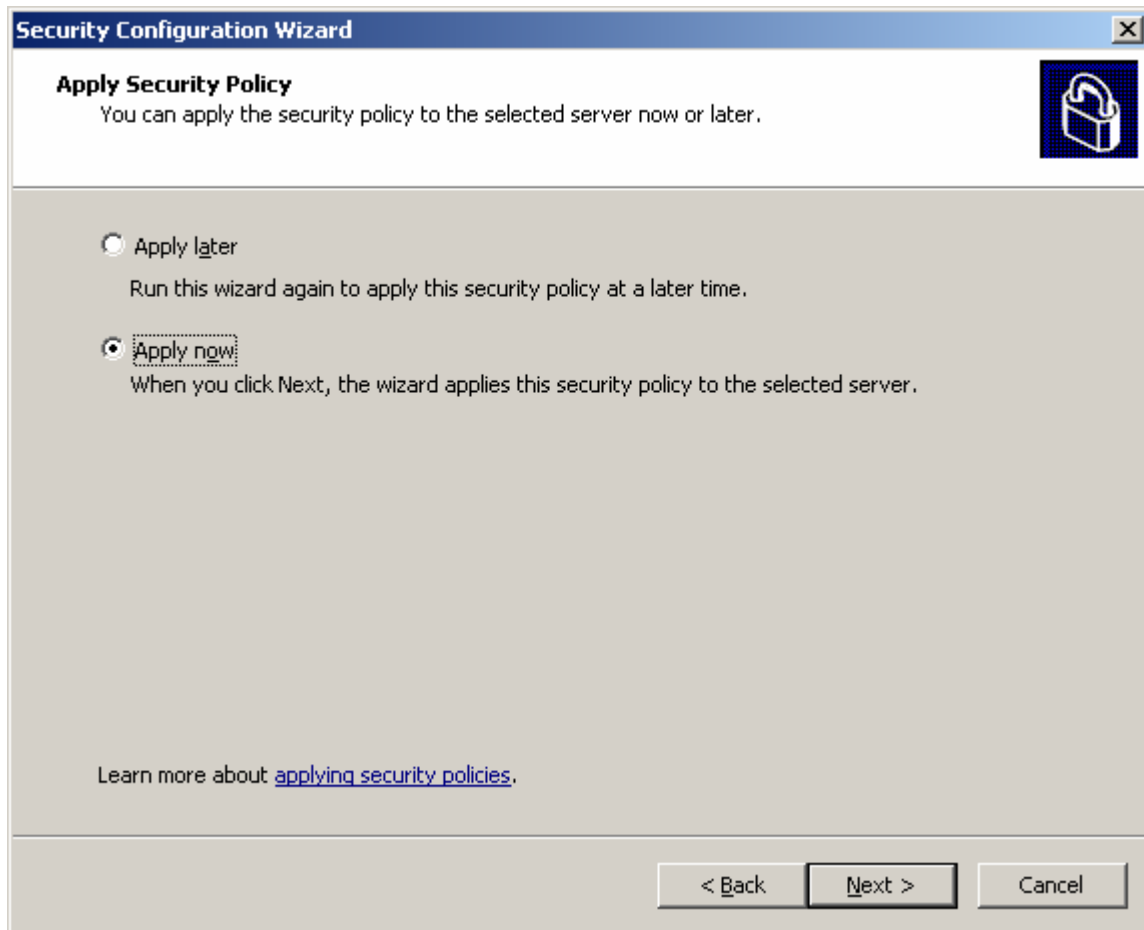
19. Check Skip this section. Click **Next** and the “Save Security Policy” screen appears below.



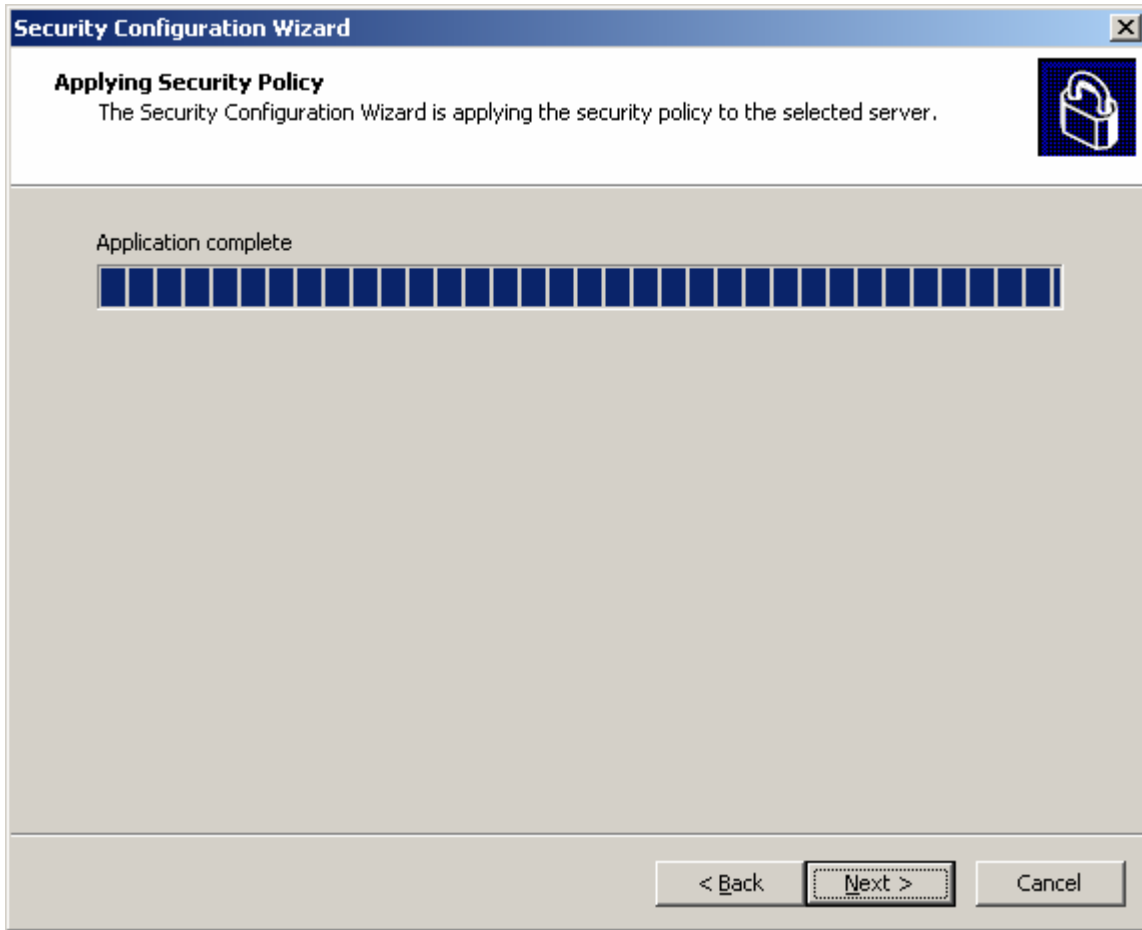
20. Click **Next** and the "Security Policy File Name" screen appears below.



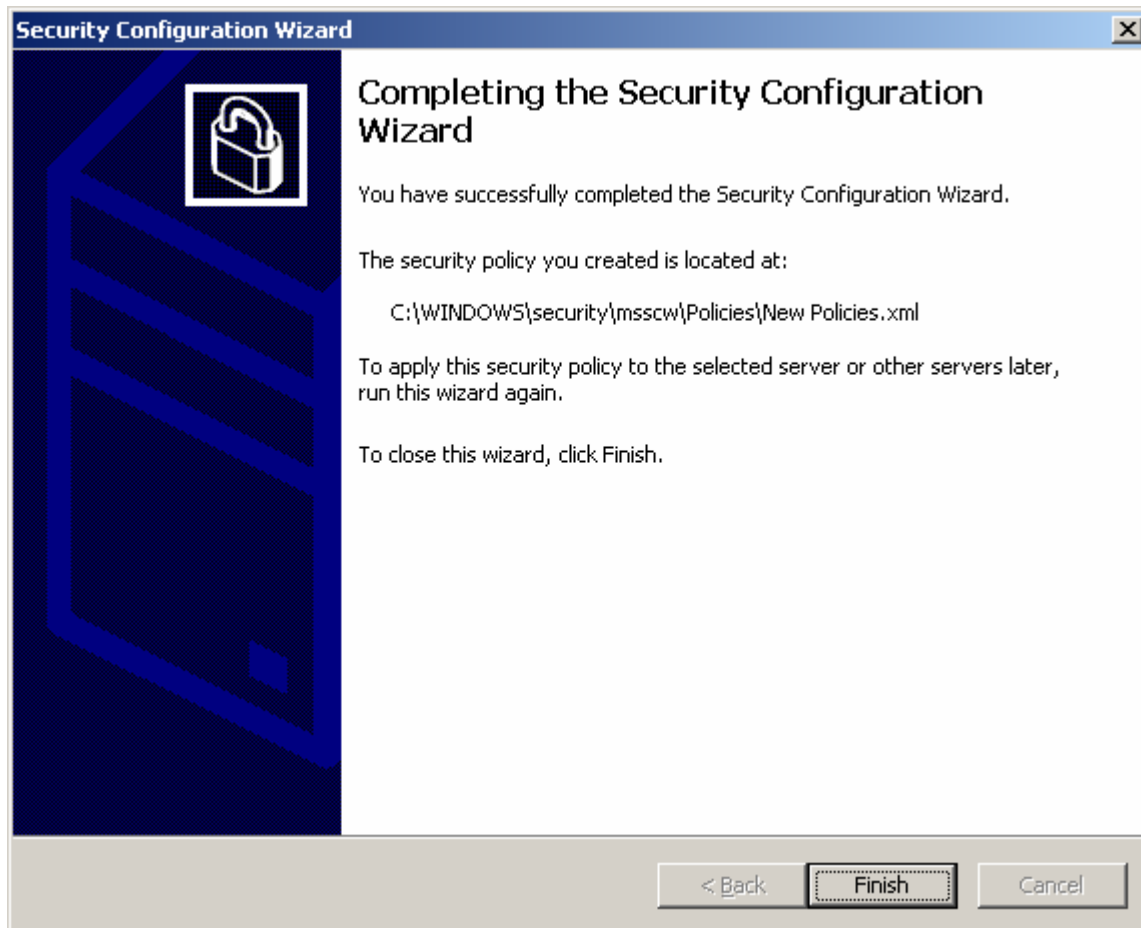
21. In the Security policy file name text box, enter a new name if you're creating a new policy. Or you can save the policy to overwrite an existing policy. Click **Next** and the "Apply Security Policy" screen appears below.



22. Choose Apply now and click **Next** to apply the new policy immediately.



23. When the application is completed, click **Next** and the screen appears below.



24. Click Finish to complete the security configuration wizard.
25. The Security Configuration Wizard is now complete.
26. Launch AGCC to see if the Security Configuration Wizard has been configured properly. If AGCC does not launch, the SCW was not configured correctly. To correct this, go through the document again and verify that the entries are accurate.