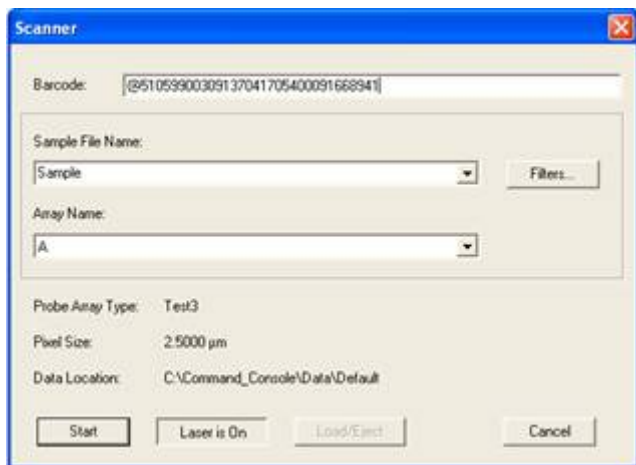


This technical notification applies to Command Console Software (AGCC) 3.2.1 used for scanning GeneChip® arrays with the GeneChip® Scanner GCS 3000 instrument. If your facility uses AGCC 3.2.1 in the manual scan mode on the GCS 3000 instrument then please continue to read this notification. The manual mode of operation is available on all GCS 3000 instruments where the operator can scan a single array after manually entering the information on the manual scan dialog as shown below. The operator enters the barcode using the external barcode reader. The system automatically identifies the sample attribute file name and the array name using the bar-code on the GeneChip® array. The operator presses the start button to initiate the scan.



The manual scan process is repeated for each physical array that is stored in a sample (.ARR) file. AGCC provides the functionality to create sample (.ARR) files that can have one or more physical arrays. The file name and probe array type for each of the physical arrays to be scanned is stored in the sample (.ARR) file.

When using AGCC 3.2.1 in the manual scan mode, we require that you create only one physical array in each sample ARR file. This limitation applies only to AGCC 3.2.1 and does not apply to any previous version of AGCC.

If you have any questions, please contact us at 1-888-DNA-CHIP (1-888-362-2447) and an experienced scientist will respond to your inquiries. Or, if your issue demands in-person dialogue or training, our field application support is ready to help.