



# Quick Reference Card

QC Toolbox, Version 2, includes tests for high resolution scanners

## Installation

1. The QC Toolbox automatically prompts you to install the application when you load the QC Toolbox CD (if autorun is enabled on the target workstation).
2. You can also install the QC Toolbox Application from the CD by selecting the "setup.exe" application located on the root directory of the CD.
3. The QC Toolbox installation process installs the software in the C:\Genechip\QCtoolbox directory.
4. The QC Toolbox installation process automatically creates an icon on the target systems desktop.
5. Once installed, you can uninstall the QC Toolbox application using the normal Windows uninstall routines.

## Startup

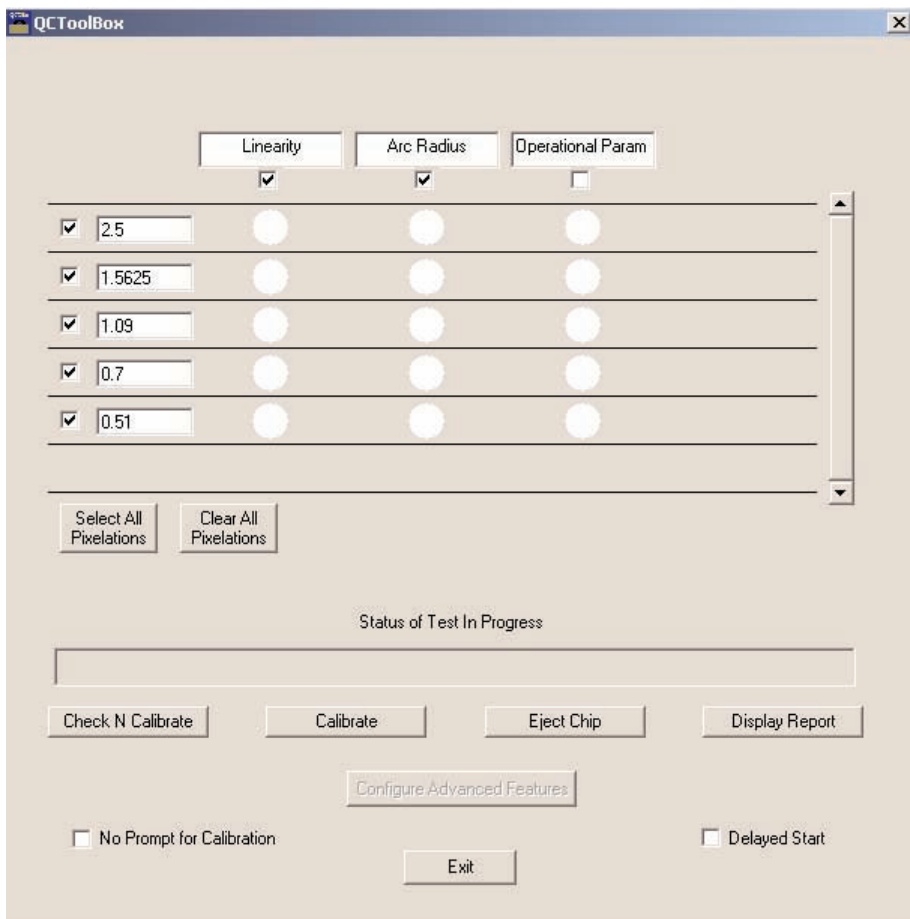
1. The GCS3000 scanner must be connected, on and warmed up.
2. To open the QC Toolbox application, click on the QC Toolbox icon, or open the Windows programs menu and select QC Toolbox.

The QC Toolbox application initially connects with the GCS3000 and will not allow the application to start if it cannot establish a connection.

3. If QC Toolbox can establish a connection, it checks the version of the GCS3000 embedded (firmware) code.
4. If the embedded code is not current, QC Toolbox displays the software updater window and asks if you want to update the GCS3000's embedded firmware code. You can elect to update the code, or if your current code is still compatible with QC Toolbox, you can skip the update.



5. If the code is not a compatible version, QC Toolbox will not allow the application to start and will automatically exit.
6. If the embedded code is current, QC Toolbox immediately displays the test window.



The QC Toolbox main window. Select the resolutions of the scanner to test: 2.5 $\mu$ m, 1.5625 $\mu$ m, 1.09 $\mu$ m, 0.7 $\mu$ m, and/or .51 $\mu$ m. The tests include Linearity and Arc Radius or Operational Parameters.

**The results of the tests are indicated by the following indications:**

Red circle—Failure: linearity (or residual arc or operational parameters) test fails  
 Yellow circle—Success: linearity (or residual arc or operational parameters) test passing but marginal

Green circle—Success: linearity (or residual arc or operational parameters) test successfully passed

## Attention

**Use clean test chips that are free of dust. Dust will adversely affect your results.**

**Proper calibration is not assured unless a GREEN circle result is obtained in the QC Toolbox main window. Once having started a calibration, be sure to complete it.**



# Quick Reference Card

## QC Toolbox Functions

If you want to:	Then do this:
Test and calibrate the scanner for X linearity and arc correction.	Check either the Linearity box or the Arc Radius box (QC Toolbox performs both tests automatically and in sequence). Then click the Check n Calibrate button and load the Marquee chip (P/N 101-0011) according to the prompt.
Calibrate the scanner for X linearity and arc correction.	Check either the Linearity box or the Arc Radius box (QC Toolbox performs both tests automatically and in sequence). Then click the Calibrate button and load the Marquee chip according to the prompt.  <b>Note: you must run the Check N Calibrate function after this Calibration test.</b>
Test and calibrate the scanner for general operational parameters.	Click the Operational Parameters box. Then click the Check n Calibrate button and load the Y-Linearity chip (or VC chip, P/N 101-0013) according to the prompt.
Calibrate the scanner for general operational parameters.	Click the Operational Parameters box. Then click the Calibrate button and load the Y-Linearity (VC) chip according to the prompt.  <b>Note: you must run the Check N Calibrate function after this Calibration test.</b>
Eject chip	Click the Eject Chip button.
View the results of the tests in a report.	Click the Display Report button.
Skip the prompt for calibration: perform the test and immediately perform the recalibration routine.	Check the No Prompt for Calibration button.
Instruct QC Toolbox to automatically perform the tests at a later time (within 24 hours).	Check the Delayed Start button. When you click the Check n Calibrate or the Calibrate button, a window will open and prompt you to enter a time for the execution of the test.
Select all the resolutions available during a test.	Click the Select All Pixelations button.
De-select all the resolutions.	Click the Clear All Pixelations button.

### Customer Support Information

Affymetrix, Inc. support@affymetrix.com Tel: 1-888-362-2447 (1-888-DNA-CHIP) Fax: 1-408-731-5441

Affymetrix UK Ltd supporteurope@affymetrix.com Tel: +44 (0) 1628 552550 Fax: +44 (0) 1628 552585

Affymetrix Japan, K. K. supportjapan@affymetrix.com Tel: (03) 5730-8200 Fax: (03) 5730-8201

Part No. 08-0186 Rev. A For Research Use Only Not For Use In Diagnostic Procedures